

AZ-Touch MKR

Rev B

construction manual

Rev.	Date	Description
A	2019-03-19	First Release
B	2021-09-16	Adaption to Version 02-xx

Tools:

*a regulated soldering iron
(25..40W) with small tip*



*a wet sponge to clean the
tip*



thin solder wire



Side cutting pliers



Needle nose pliers



Medium cross slot screwdriver



Optional multimeter



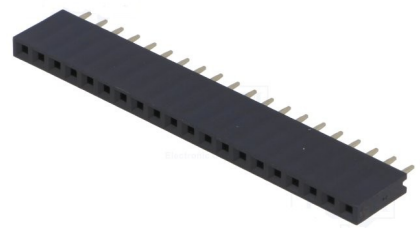
Part list:



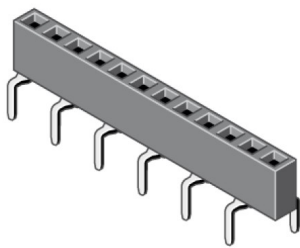
2x
2pole terminal block
(K2)



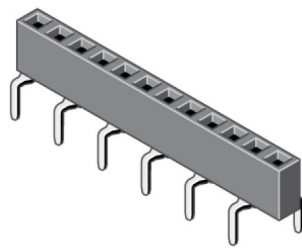
1x
4pole terminal header
(K2)



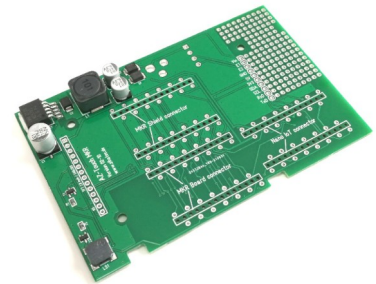
1x
14pole female header
(K5)



4x
14pole centipede female
header



2x
15pole centipede female
header



1x
Pre-assembled pcb

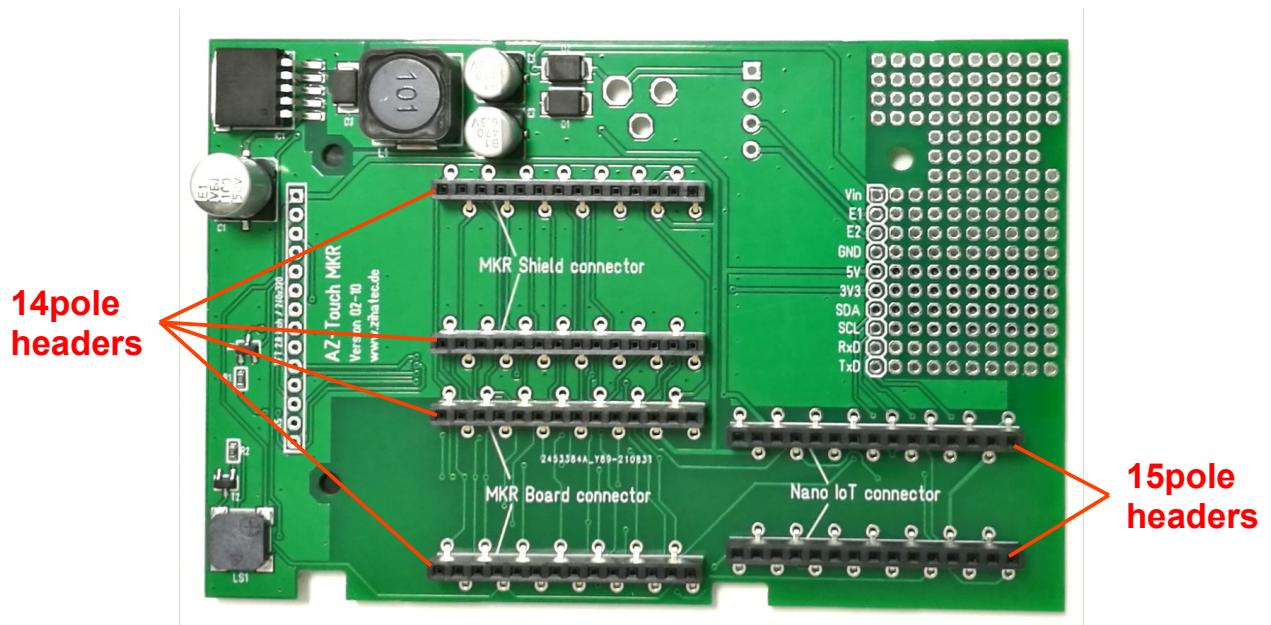


7x
Screw M3 4mm

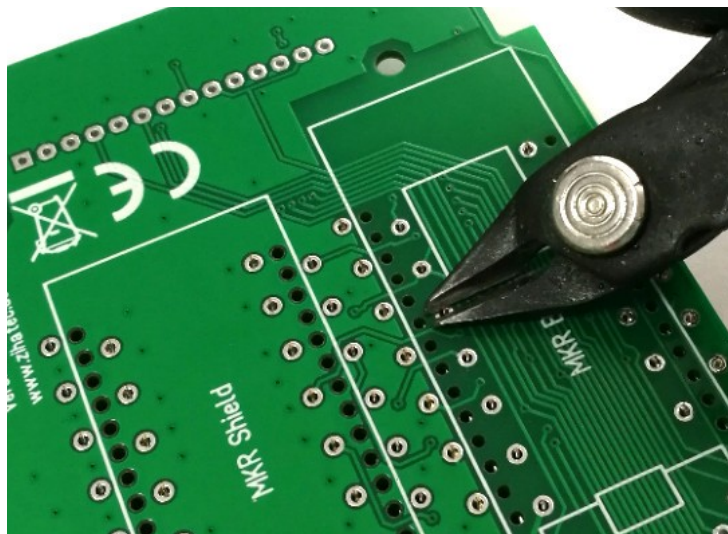


4x
Spacer M3 11mm

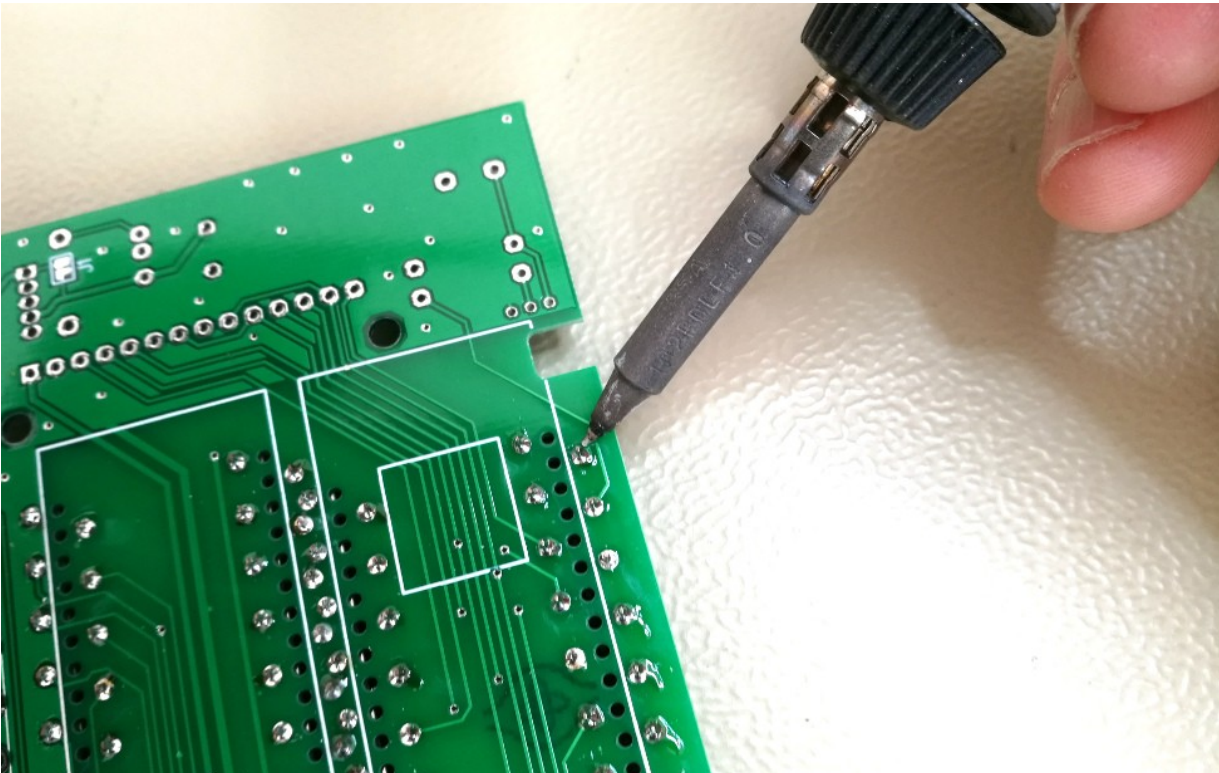
1.) Place and solder the centipede headers



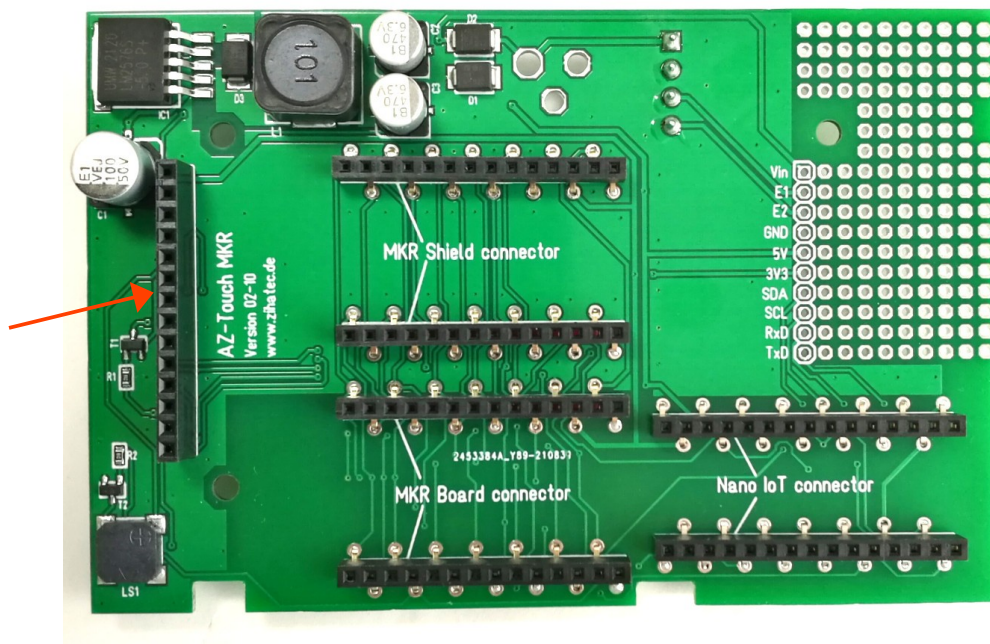
It is recommended to shorten the pins on the back flat with a wire cutter before soldering the connectors:



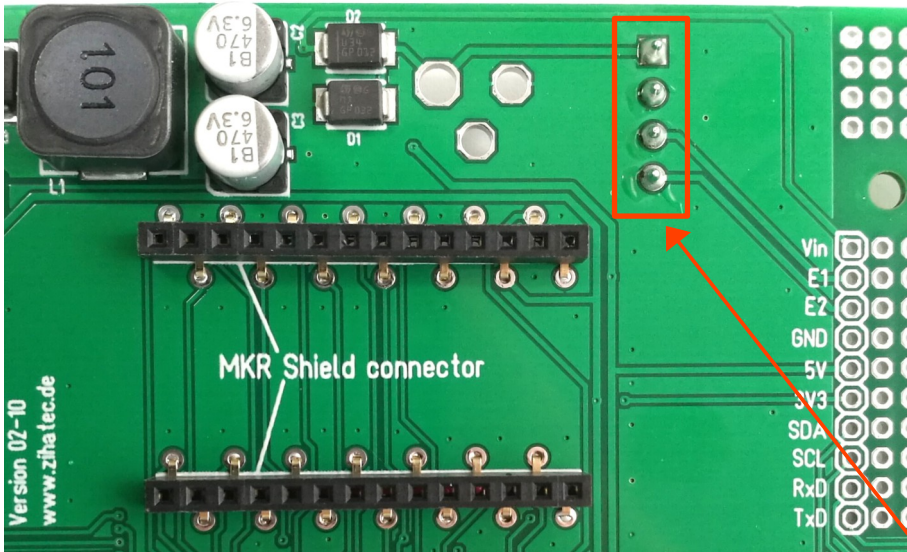
Now you can solder the centipede headers from the opposite side. Please take care that the headers placed tight as possible to the pcb:



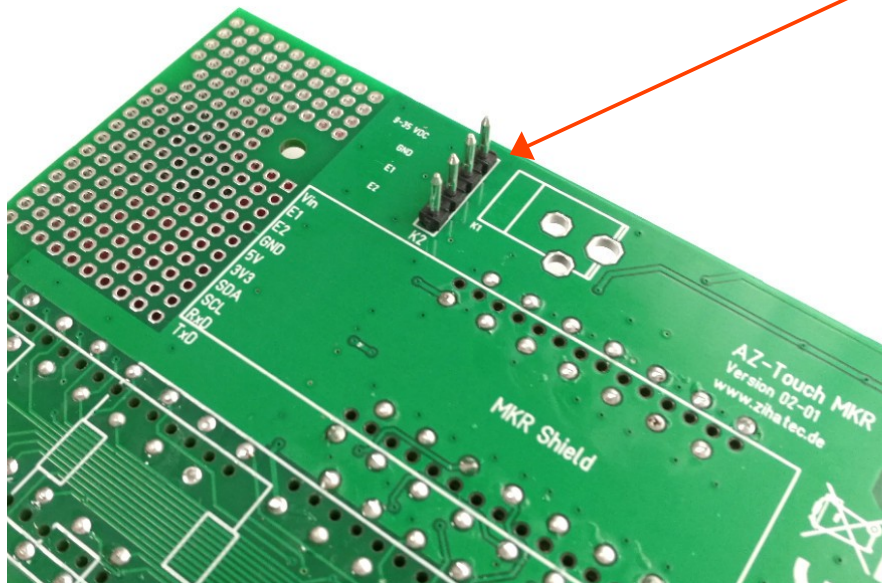
2.) Place and solder the header K5



3.) Place and solder the header K2



Attention!
K2 is placed on the
pcb backside

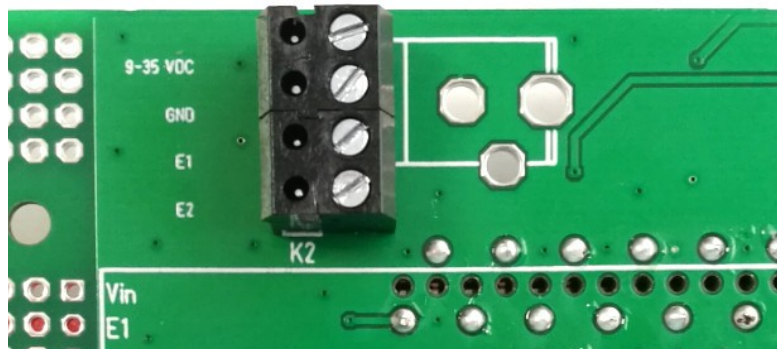


4.) Prepare the terminal blocks

Find the 3.5mm terminal blocks, they're brown and come in 2-pin shapes. You'll need to slide two 2-pin blocks together:

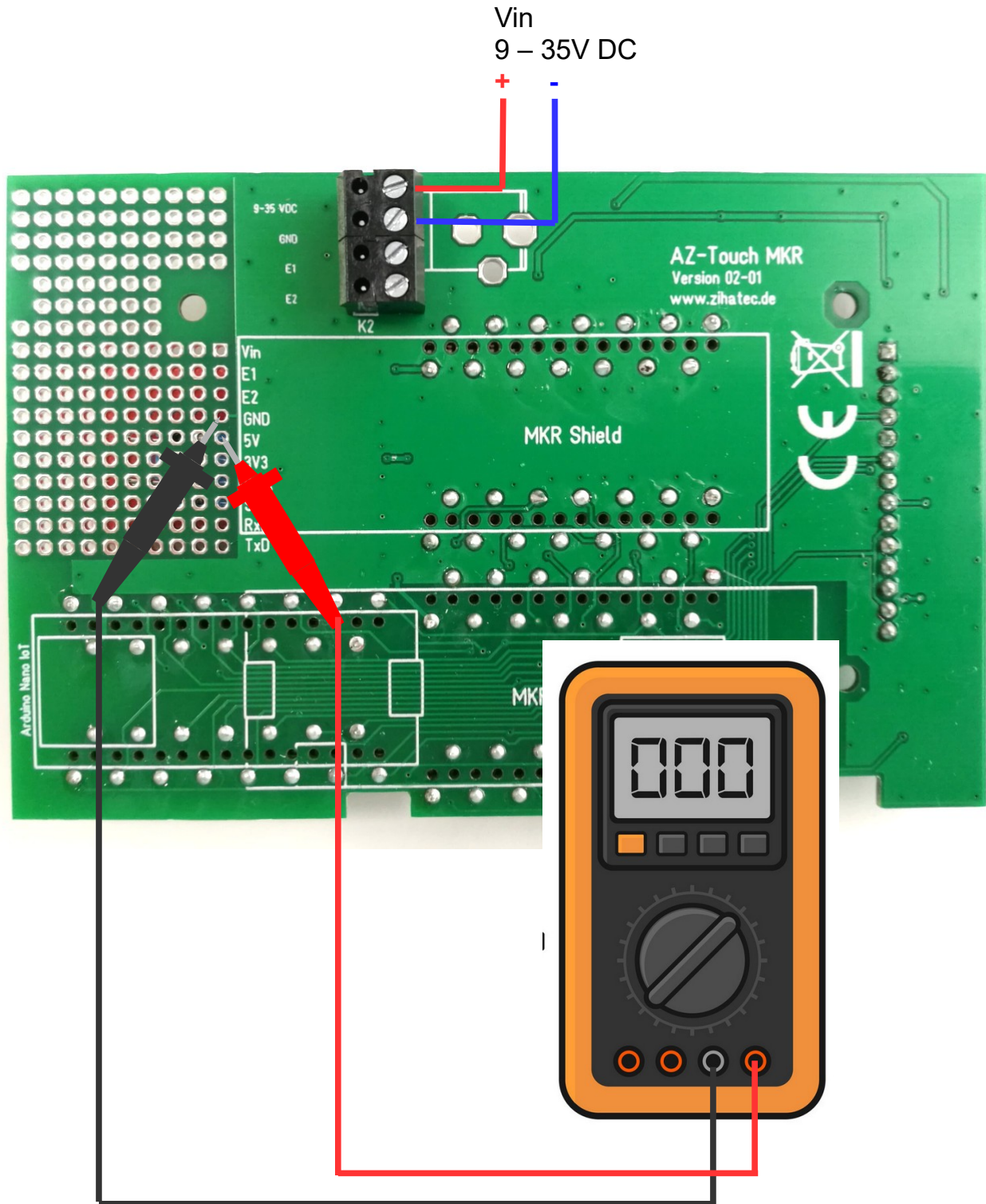


Now you can plug the terminal block onto the pin header:



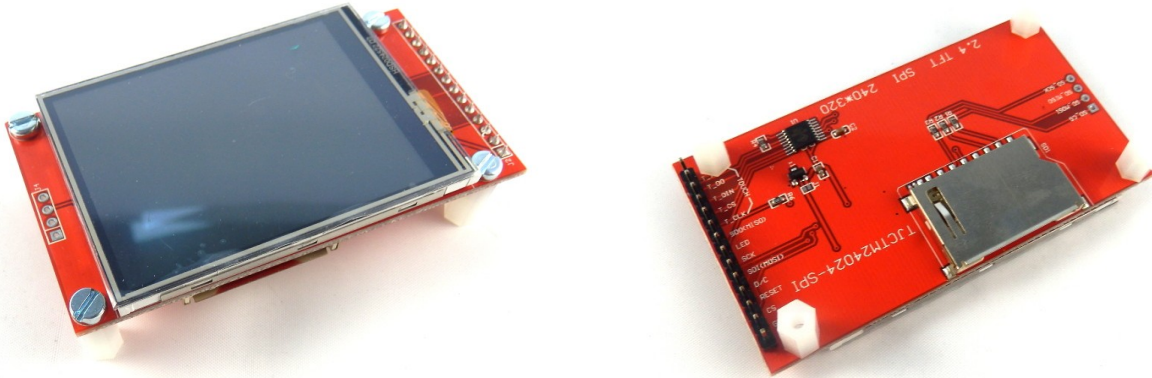
5.) Check the power supply

Its time to check the function of the power supply before the final assembly of the unit.



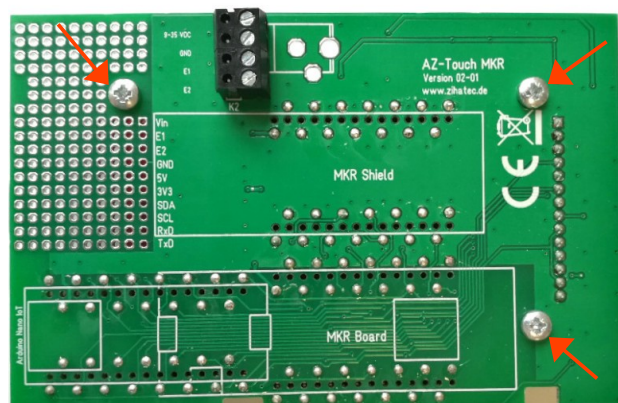
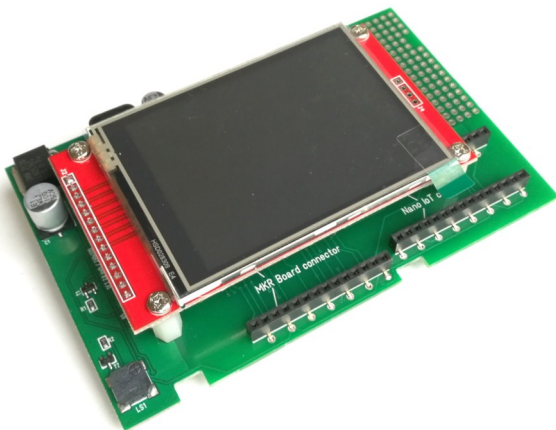
You have to measure a voltage between 4.9 – 5.1V!

6.) Mounting of Spacers

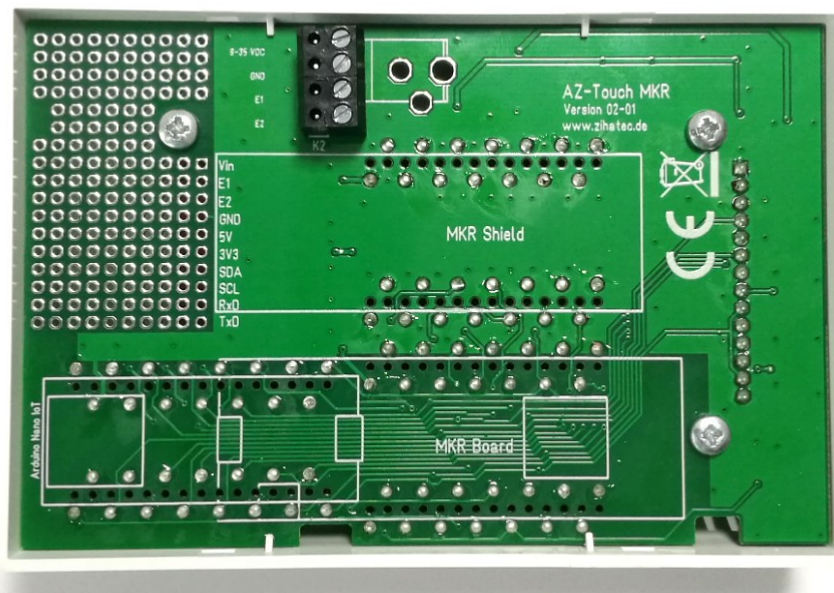
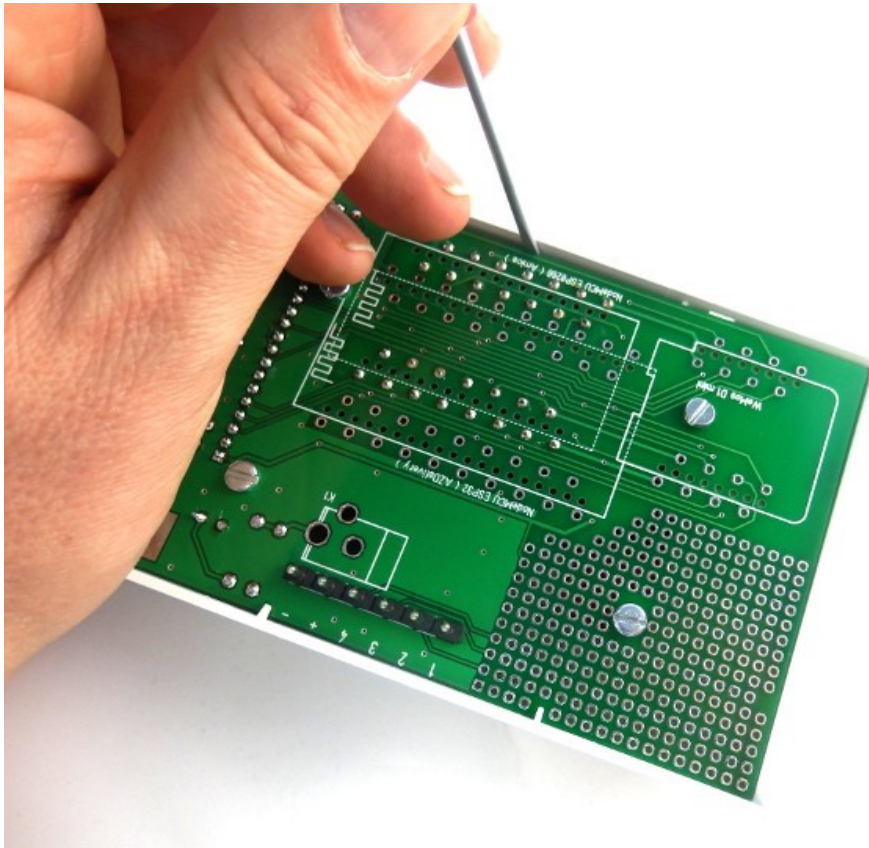


7.) Mounting of Touchscreen

Plug the touchscreen into K5 and fix it with 3 M3 screws on the pcb backside.

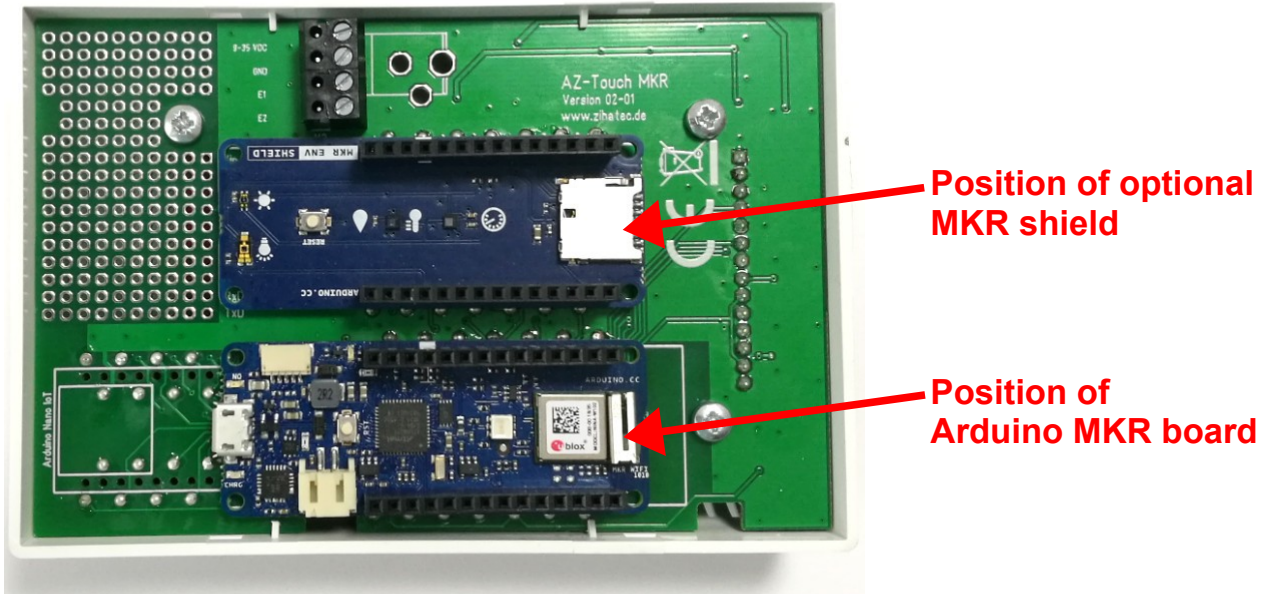


8.) Mounting of pcb in the top shell

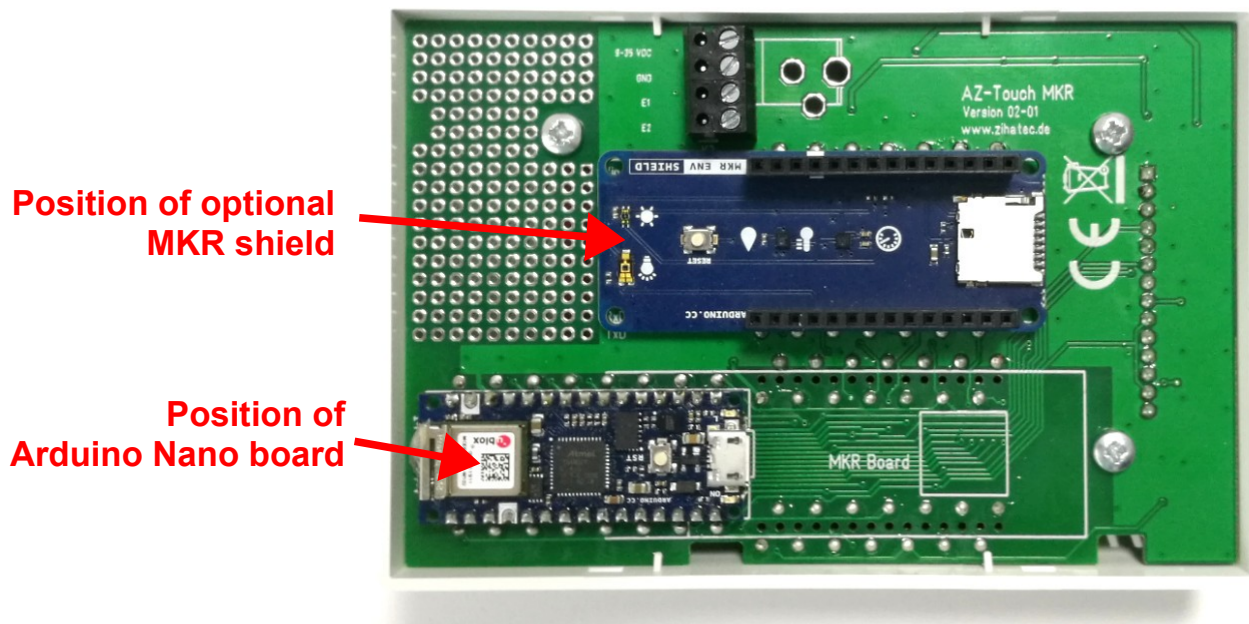


Position of ventilation slots on this side!

9.) Mounting of Arduino Boards and Shields



OR



Finish